



Accessing your web site via FTP

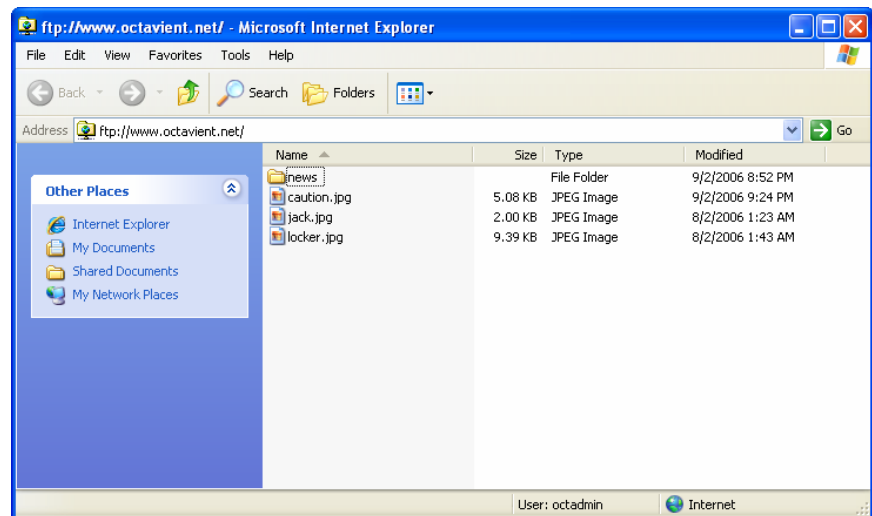
Instructions

Date: 02/11/2007

rev ws

Your web site on Octavient's web server is accessible via normal FTP protocols.

Different applications can be used to connect to this resource. Below are instructions for using the most common options to connect to the server.



Using Internet Explorer 6 2

Using Internet Explorer 7 3

Using an FTP client¹ (i.e., an FTP program such as WS FTP, CuteFTP, Filezilla, etc.) 5

¹ Note: For best results, it is recommended that you use an FTP client to connect to Octavient's web server. Results using Internet Explorer may vary.



Using Internet Explorer 6

Note: For best results, it is recommended that you use an FTP client to connect to Octavient's web server. Results using Internet Explorer may vary.

1. Direct your web browser to <ftp://www.yourwebsite.com>
2. A login dialog box will appear immediately (Fig 1).

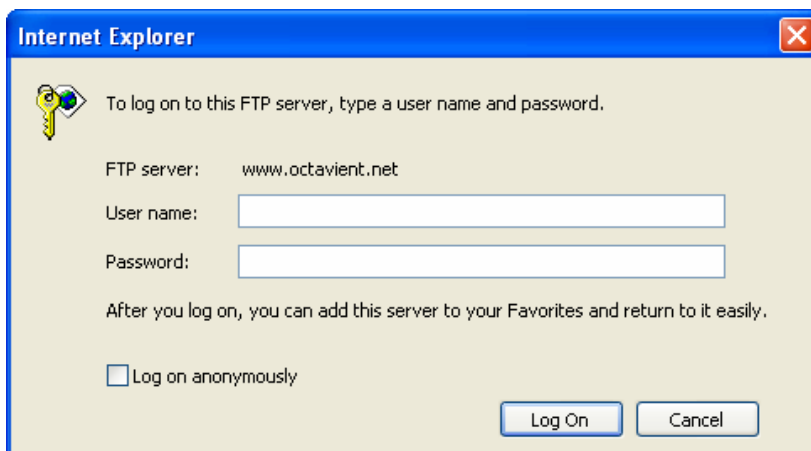


Figure 1

3. Enter your username and password.
4. Once logged in, your browser will behave like a Windows Explorer window, allowing you to drag and drop files into and out of the window.



Using Internet Explorer 7

Note: For best results, it is recommended that you use an FTP client to connect to Octavient's web server. Results using Internet Explorer may vary.

1. Direct your web browser to ftp://www.yourwebsite.com
2. A login dialog box will appear immediately (Fig 2)

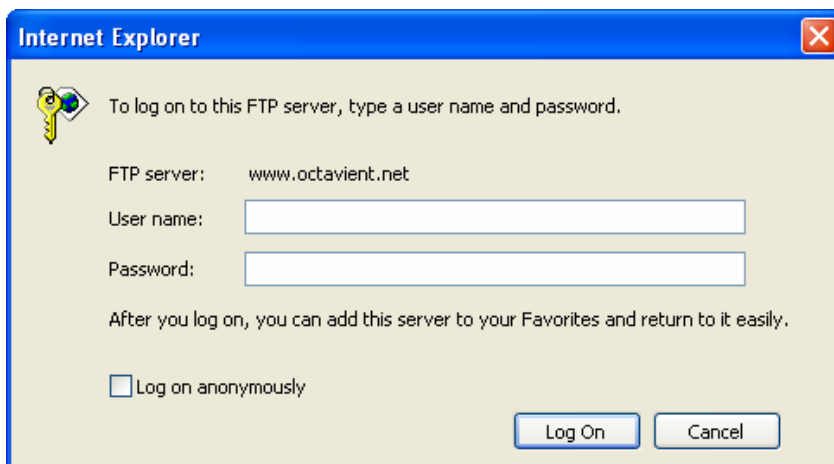


Figure 2

3. Enter your username and password.
4. At this point, the browser MAY present the error depicted in Fig 3.

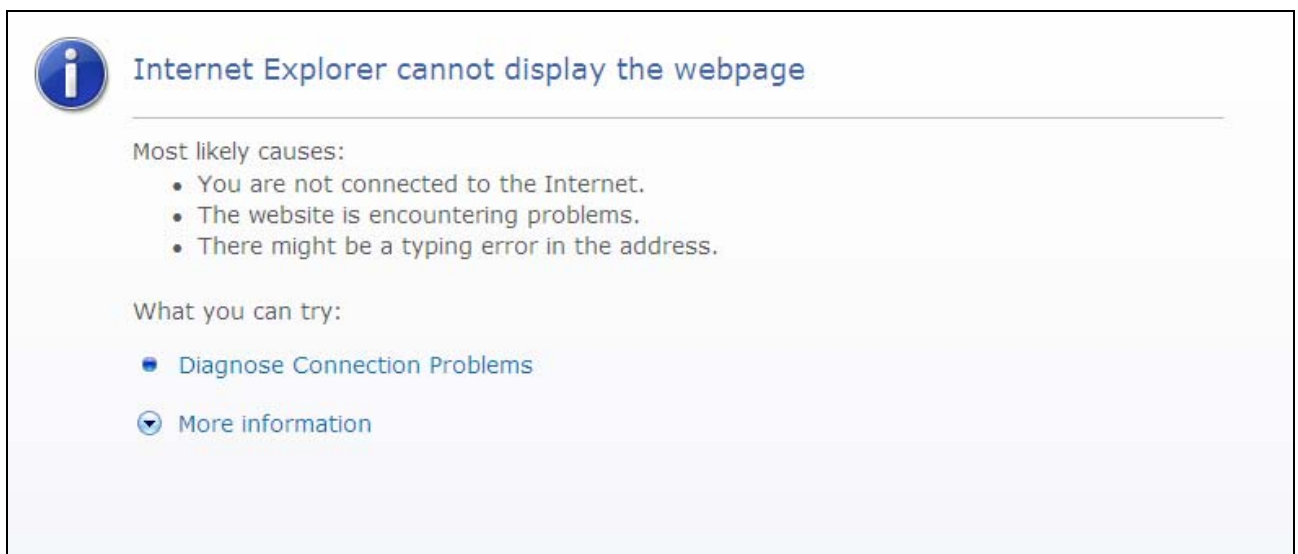


Figure 3



5. Ignore this error.
6. On the browser's toolbar, click **Page** and select "Open FTP Site in Windows Explorer." (Fig 4)

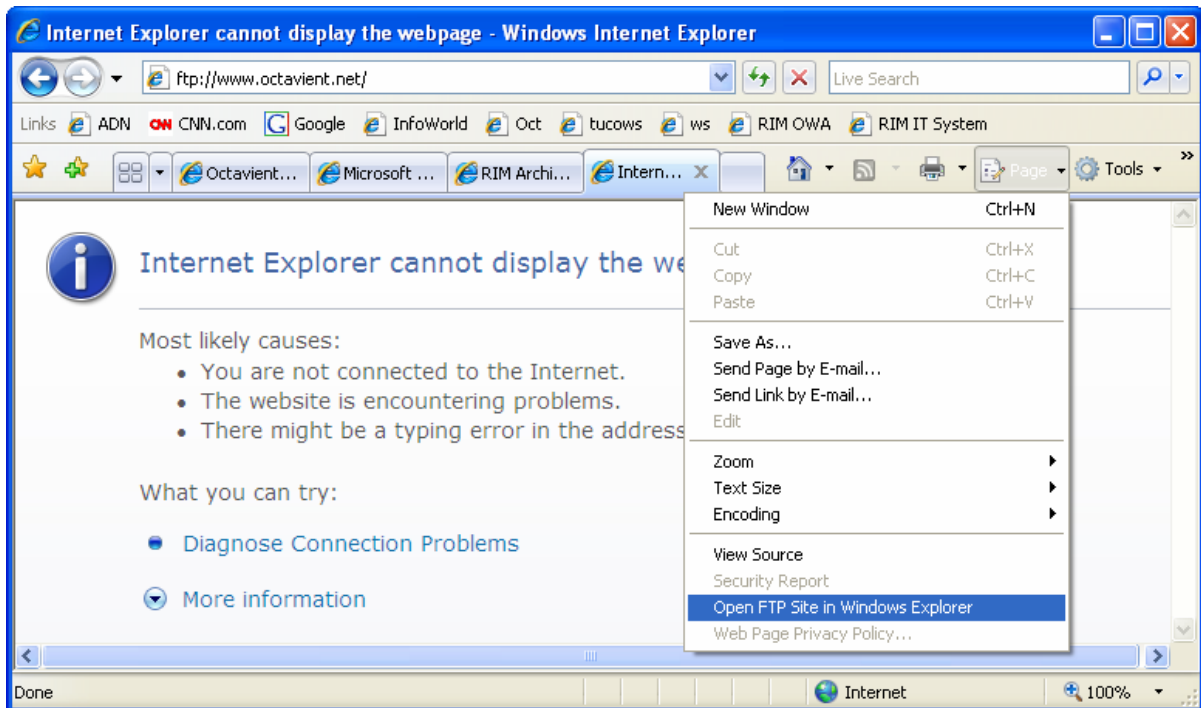


Figure 4

7. Windows Explorer will launch automatically.
8. You MAY be prompted to re-enter your username and password.
9. Once logged in, your browser will behave like a Windows Explorer window, allowing you to drag and drop files into and out of the window.



Using an FTP client (i.e., an FTP program such as WS FTP, CuteFTP, Filezilla, etc.)

Note: For best results, it is recommended that you use an FTP client to connect to Octavient's web server. Results using Internet Explorer may vary.

Although the screenshots below come from FileZilla, a General Public License (GPL) product available at <http://sourceforge.net/projects/filezilla/>, Octavient neither advocates for nor against the use of this specific FTP client application.

The below instructions will, in general terms, apply to most modern FTP clients.

Site details

Host: Port:

Servertype:

Logontype

Anonymous Normal Account

Bypass proxy settings

User: Account:

Password:

Don't save password.

Figure 5

Fig 5: Host / account configuration

1. The host or FTP address is <ftp://www.octavient.net>
2. The port is 21
3. Anonymous access is disabled; you must use an account with a username and a password.

Passive transfer mode settings

Use default Use passive mode Use active mode

Figure 6

Fig 6: Transfer mode

1. Transfer settings must be set either to "passive mode," or to "default" or "auto-detect."

Once connected, most FTP applications will present you with a split-screen view, with your local computer and directories on the left, and the directories and files on the server on the right (see Fig 7 below).

To upload files to the server, select files and/or folders on the left and drag them to the appropriate folder on the right. To download, select files and/or folders on the right, and drag them to the appropriate folder on the left.



octavient

March 14, 2007

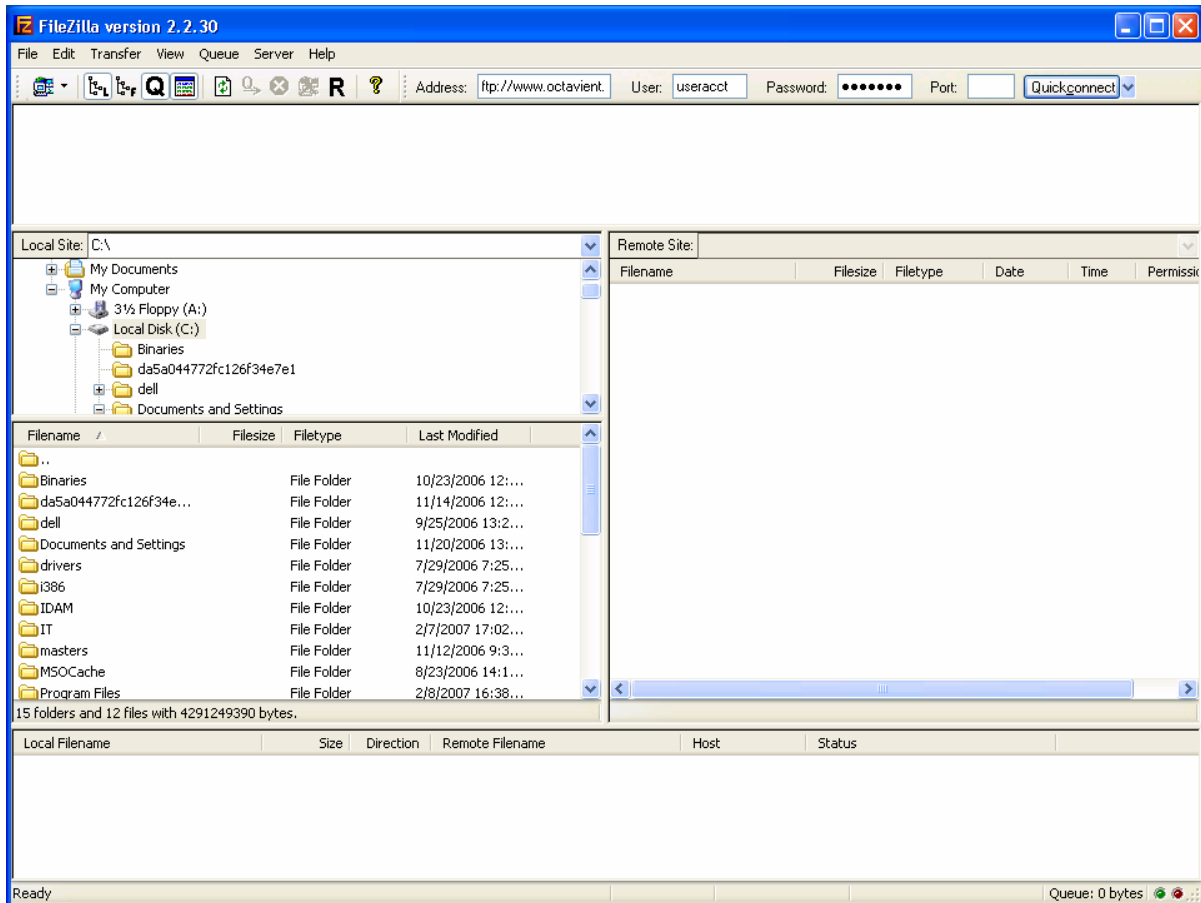


Figure 7

For support, contact support@octavient.net or 916-541-4848.